

# Yealink

## T46S

**Dual port Gigabit Ethernet, Power over Ethernet**

**4"x3" TFT colour display with backlight**

**HD Voice: HD Codec, HD speaker, HD handset**

**16 VoIP accounts, BLF/BLA, IPV6, Open VPN**

**Supports Bluetooth Headsets & WiFi dongle**

**T4S Unified firmware and auto-provisioning**

**USB call recording**

**Hearing Aid Compatible**



PoE

The T46S is an elegantly designed IP phone for executives and busy professionals. Its large, crystal clear display gives simple navigation through a wealth of productivity enhancing features.

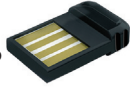
The 10 multi-function keys can be programmed to access 3 pages of 9 features and can be used for accounts, BLFs, system functions or simply for speed dials.

As well as support for corded and wireless headsets, the T46S also incorporates a USB port allowing Bluetooth headsets (via BT40 Bluetooth dongle), WiFi access (via WF40 WiFi dongle) and call recording. Auto provisioning and manual programming follow the same format as the rest of the Yealink range, making life simpler for installers and technicians. The T46S is certified compatible with 3CX, Asterisk and BroadSoft BroadWorks, making it the ideal choice for busy managers.

# Yealink

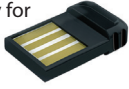
# T46S

**WF40 WiFi Dongle**  
Enables connectivity to wireless networks



## T46S Accessories

**BT40 Bluetooth Dongle**  
Provides functionality for Bluetooth headsets



**EXP40 Expansion Module**  
Adds 40 more feature keys (2 pages of 20)  
Up to 6 expansion modules can be added



**YHS32 Headset**  
Lightweight over the-head monaural headset



**EHS36 Electronic Hookswitch Adapter** Enables support for Plantronics, Jabra and Sennheiser DECT cordless headsets



## Audio Features

- > HD voice: HD handset, HD speaker
- > Hearing aid compatible (HAC) handset
- > Codecs: Opus, G.722, G.711(A/μ), G.723, G.723.1, G.729AB, G.726, iLBC
- > DTMF: In-band, Out-of-band (RFC 2833) and SIP INFO
- > Full-duplex hands-free speakerphone with AEC
- > VAD, CNG, AEC, PLC, AJB, AGC

## Phone Features

- > 16 VoIP accounts
- > Call hold, mute, DND
- > One-touch speed dial, hotline
- > Call forward, call waiting, call transfer
- > Group listening, SMS, emergency call
- > Redial, call return, auto answer
- > 3-way conferencing
- > Direct IP call without SIP proxy
- > Ring tone selection/import/delete
- > Set date time manually or automatically
- > Dial plan, XML Browser, Action URL/URI
- > RTCP-XR (RFC3611), VQ-RTCPXR (RFC6035)
- > USB port (2.0 compliant) for: Bluetooth earphone through BT40, Wi-Fi through WF40, USB call recording through USB flash drive
- > Enhanced DSS key

## Directory

- > Local phonebook up to 1000 entries
- > Black list
- > XML/LDAP remote phonebook
- > Smart dialing
- > Phonebook search/import/export
- > Call history: dialed/received/missed/forwarded

## IP-PBX Features

- > Busy Lamp Field (BLF)
- > Bridged Line Appearance (BLA)
- > Anonymous call, anonymous call rejection
- > Hot-desking, voice mail
- > Flexible seating
- > Call park, call pickup

- > Executive and Assistant
- > Centralized call recording
- > Visual voice mail
- > Call recording

## Display and Indicator

- > 4.3" 480 x 272-pixel color display with backlight
- > 16 bit depth color
- > LED for call and message waiting indication
- > Dual-color (red or green) illuminated LEDs for line status information
- > Wallpaper
- > Intuitive user interface with icons and soft keys
- > Multilingual user interface
- > Caller ID with name and number
- > Screensaver
- > Power saving

## Feature Keys

- > 10 line keys with LED
- > 10 line keys can be programmed up to 27 paperless DSS keys (3-page view)
- > 7 features keys: message, headset, hold, mute, transfer, redial, hands-free speakerphone
- > 4 context-sensitive "soft" keys
- > 6 navigation keys
- > Volume control keys
- > Illuminated mute key
- > Illuminated headset key
- > Illuminated hands-free speakerphone key

## Interface

- > Dual-port Gigabit Ethernet
- > Power over Ethernet (IEEE 802.3af), class 3

- > 1 x USB port (2.0 compliant)
- > 1 x RJ9 (4P4C) handset port
- > 1 x RJ9 (4P4C) headset port
- > 1 x RJ12 (6P6C) EXT port: Supports up to 6 Expansion Modules for an attendant console application

## Other Physical Features

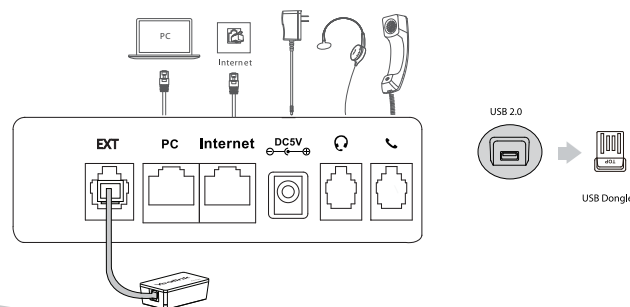
- > Stand with 2 adjustable angles
- > Wall mountable
- > External Yealink AC adapter (optional): AC 100~240V input and DC 5V/2A output
- > Power consumption (PSU): 1.92-4.93W
- > Power consumption (PoE): 2.68-7.57W
- > Dimension (W\*D\*H\*T): 244mm\*213mm\*185mm\*54mm
- > Operating humidity: 10~95%
- > Operating temperature: -10~50°C

## Management

- > Configuration: browser/phone/auto-provision
- > Auto provision via FTP/TFTP/HTTP/HTTPS for mass deploy
- > Auto-provision with PnP
- > Broadsoft device management
- > Zero-sp-touch, TR-069
- > Phone lock for personal privacy protection
- > Reset to factory, reboot
- > Package tracing export, system log

## Network and Security

- > SIP v1 (RFC2543), v2 (RFC3261)
- > Call server redundancy supported
- > NAT traversal: STUN mode
- > Proxy mode and peer-to-peer SIP link mode

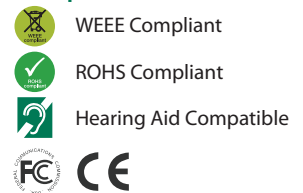


- > IP assignment: static/DHCP/PPPoE
- > HTTP/HTTPS web server
- > Time and date synchronization using SNTP
- > UDP/TCP/DNS-SRV(RFC 3263)
- > QoS: 802.1p/Q tagging (VLAN), Layer 3 ToS DSCP
- > SRTP for voice
- > Transport Layer Security (TLS)
- > HTTPS certificate manager
- > AES encryption for configuration file
- > Digest authentication using MD5 MD5-sess
- > OpenVPN, IEEE802.1X
- > IPv6, LLDP/CDP/DHCP VLAN, ICE

## Package Features

- > Package content:
  - Yealink SIP-T46S IP phone
  - Handset with handset cord
  - Ethernet Cable (2m CAT5E UTP Cable)
  - Stand
  - Quick Start Guide
  - Power Adapter (Optional)
  - Wall Mount Bracket (Optional)
- > Qty/CTN: 5 PCS
- > N.W/CTN: 7.6 kg
- > G.W/CTN: 8.4 kg
- > Giftbox size: 274mm\*255mm\*128mm
- > Carton Meas: 660mm\*286mm\*263mm

## Compliance



# Yealink